



**RUN
SYSTEM**
Because Every Business is Unique

RUN System – Resources Collaboration Platform



Comprehensive Integrated application with 12 Business Suite, 27 functional modules, 70 sub modules and +3000 business function to:

Start answering for current issue

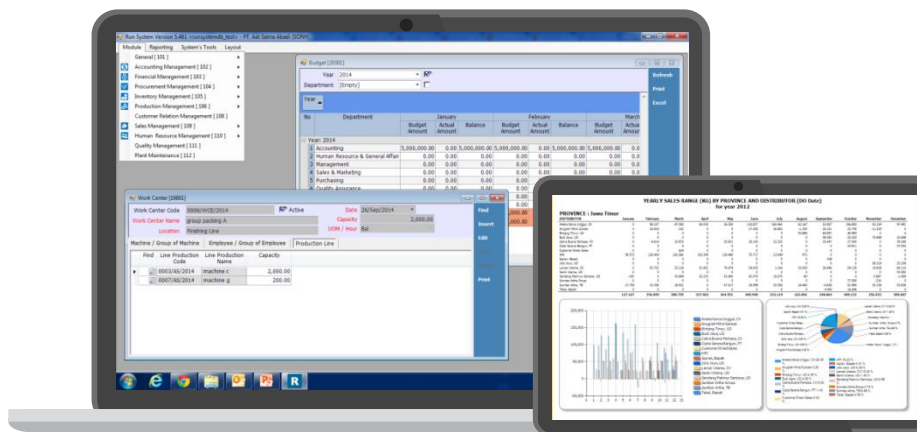


Increase
Inventory Turnover



Manage
Cash Flow

Have the answer for current issue



*Just and Only **20%** of
SAP/ORACLE Project Cost
with*

- Procurement Management (PCS)
- Financial and Cost Management (FICO)
- Inventory & Material Management (IMM)
- Human Resources Management (HR)
- Customer Relationship Management (CRM)
- Transportation Management System (TMS)
- Production Management (PP)
- Human Capital Management System (HCMS)
- Plant Maintenance (PM)
- Quality System (QSM)
- Project System (PS)
- Business Workflow & Dashboard

Our Business Application Framework



Executive Management Suite
Workflow/Web Approval
Management Dashboard
Management Web Reporting



Mobile POS



ITL – International Trade Logistic
Shipment Planning
Custom Declaration

ESS – Employee Self Service



FICO – Finance & Cost Management
Enterprise Accounting Management
Cost Control Management
Asset Management
Treasury & Cashflow Management
Budgeting Management
Account Receivable Management
Account Payable Management

IMM – Inventory Material Management

Inventory Management
Warehouse Management
Material Management



HCMS – Human Capital Management System

Organization Structure	Salary Management
Mutation, Promotion & Demotion	Allowance
Performance Management (KPI)	Benefit
Employee Assessment	Deduction
Training Management	Employee Loan Management
Recruitment	BPJS
Employee Management	Incentive
Contract Management	Payroll
Claim & Reimbursement	Employee Tax
Working Schedule Management	Travel Request & Planning
Attendance Management	Travel Expense
OT management	
Leave Management	

PUR – Procurement Management

Purchasing Management
Raw Material Purchasing Management
eProcurement



PM - Asset Repair & Maintenance

Work Order Management
Asset Maintenance
Preventive Maintenance



PP - Production Management

MRP
Capacity & Production Planning
Production Management



SD - Sales & Distribution Management

Customer Profile Management
Sales Process Management
Distribution Management

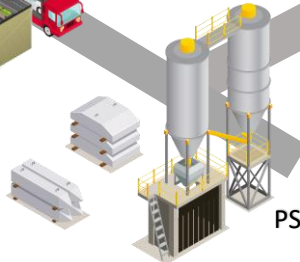


QS – Quality System

Quality Parameter
Quality Planning
Quality Inspection

PS – Project System

Pipeline project
Project execution
Project cost and payment



RUN System Modules & Features

Module

Financial & Cost Control	Procurement Management	Inventory & Material Management	Production Management	Quality System	Plant Maintenance	Sales & Distribution Management	Human Resources Management	Project System	Human Capital Management	Workflow & Configuration
--------------------------	------------------------	---------------------------------	-----------------------	----------------	-------------------	---------------------------------	----------------------------	----------------	--------------------------	--------------------------

Sub Module

Cost Control	Purchasing Management	Inventory Management	MRP	Quality Management	Asset Maintenance	Customer Management	Employee Management	Project Pipeline	Performance Management	User Administration
Cash Flow Management	Contract Management	Warehouse Management	Capacity Planning	Quality Parameter	Preventive Maintenance	Sales Management	Payroll Management	Project Execution	Organization Development	Workflow Approval
Asset Management	Raw Material Purchasing	Material Management	Production Planning	Quality Planning	Work Order Management	Point of Sales	Compensation & Benefit	Project Cost & Payment	Training Management	System Configuration
Enterprise Accounting			Production Management	Quality Inspection		International Trade Logistic	Time Management		Recruitment Management	Management Dashboard
Budget Management				Root Cause Analysis		Distribution Management	Travel Management			
Account Payable						Custom Declaration	Tax & Social Security			
Account Receivable							Employee Self Service			

Additional Feature

E - Recruitment	E - Procurement	Learning Management System	Document Management System	Taskforce Management	Virtual Account Automation	Online Tax Integration
System Integration	Supply Chain Financing	Micro Point of Sales	Enterprise Internal Mobile Apps	Bank Integration		

Connecting All Parties in One Ecosystem

RUN MARKET

- ▶ Request Material
- ▶ Ordering
- ▶ Good Receiving
- ▶ Stocking
- ▶ Keep an Account
- ▶ Purchases Invoicing

CUSTOMER

UMKM

KOPERASI

SUPPLIER

- Issue Quotation ◀
- Receive Order ◀
- Shipment of Product ◀
- Keep an Account ◀
- Invoicing ◀
- Receive Payment ◀

Our Key Partners

Our focus is on creating a solution, other things we entrust to the experts through collaboration

Device & Network Partner



Application Partner



Distribution Partner



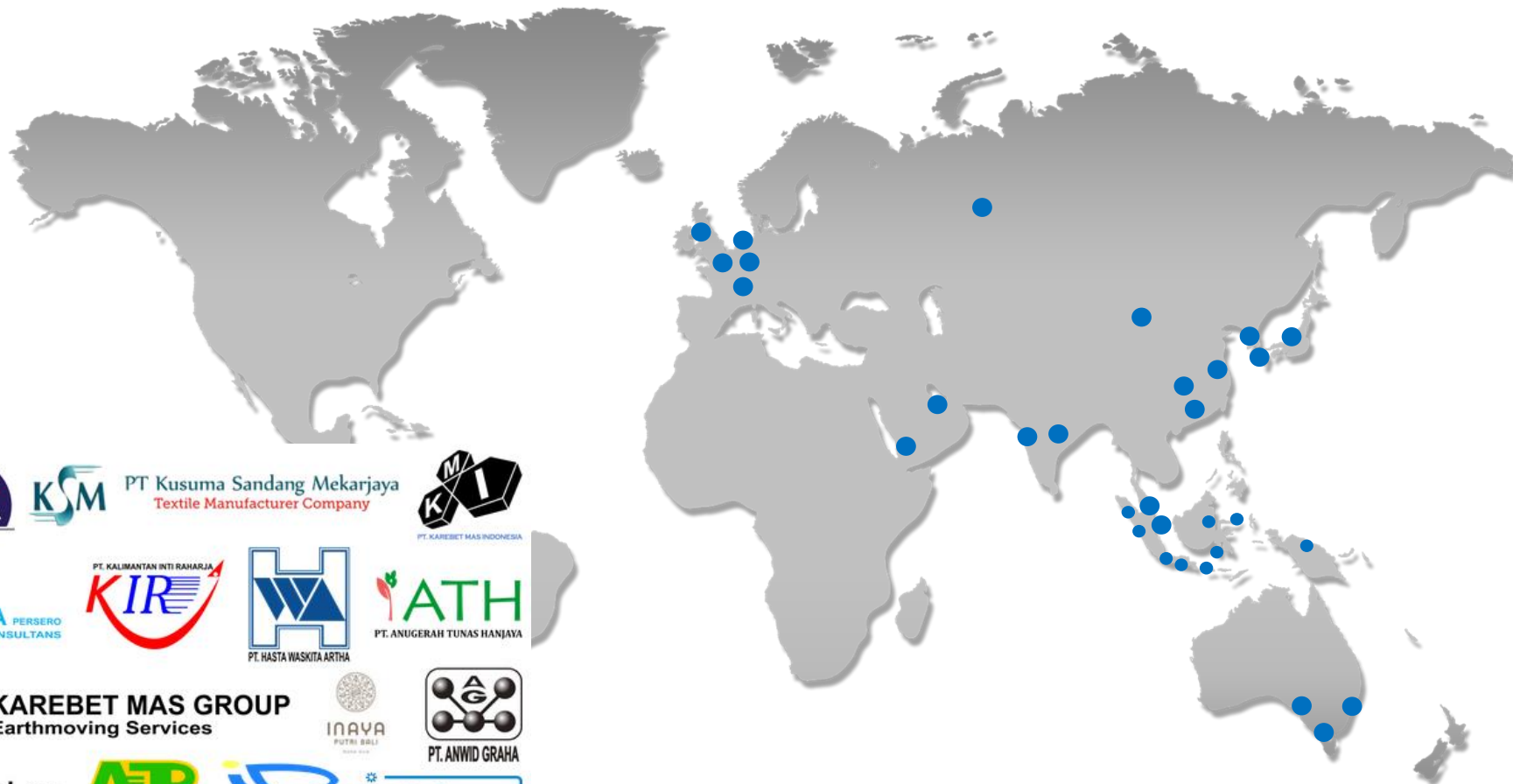
Implementation Partner



Strategic Partner



Footprint



16 Countries of RUN System Users

+50 Cities of RUN System Users

12 Industries

21 Business Partners

1 Registered IP



Use case example



Company Name

PT Indotama Omicron Kahar

Industry Sector

Manufacture

Implemented Modul

- Financial and Cost Control
- Procurement
- Raw Material Procurement
- Inventory & Material Management
- Production Management
- Sales and Distribution
- Plant Maintenance
- Quality System
- Human Resources



source:indotama.co.id



The **large** amount of **cashflow** and **transactions** turnover in a day makes the company quite **difficult** to **calculate** and **record** their payments either their purchases.

The **variety of employee and labor costs**, will it be daily or monthly, has made the company face the difficulty and **complexity of calculating salary**.



With **RUN System Procurement and FICO Module**, it helps the company to record and validate transaction precisely, so the information and financial statement will be **real time**. In addition, the company also gain **1 – 2 % of tax efficiency** due to the accuracy of transaction calculation by system.

With **RUN System Human Resource Management, Production and FICO Module**, it helps the company to calculate employee's payroll more precise by using **Shop Floor Control** menu to ensure the suitability of labor's work and what they will receive in pay slip.

Use case example



PT. TAMAN WISATA CANDI

Company Name

PT Taman Wisata Candi (persero)

Industry Sector

Services - Tourism

Implemented Modul

- Financial and Cost Control
- Procurement
- Inventory & Material Management
- Human Resources



Before

Decentralized Cashflow, will caused possible loss of income in cash.

Lead time in revenue recognition and record.



After

With **RUN System FICO Module**, cashflow turnover will be **centralized** and recorded automatically by the digitalization and integration of system, so it makes the **financial report** of the company more precise and **realtime**.



source:borobudurpark.com

Use case example



Company Name

PT Kawasan Industri Medan (persero)

Industry Sector

Services – Industrial Park

Implemented Modul

- Financial and Cost Control
- Procurement
- Inventory & Material Management
- Sales and Distribution
- Human Resources



source: kim.co.id

Before

Long sales contract (up to 20 years ago) causing **uncontrolled transaction records.**

Add **new business** units that **differ** from their **core business.**

After

With **RUN System Sales Distribution Module**, it helps the company to organize their transactions record and manage to find uncollectible account receivables by using **DO to Customer.**

No need customization because our system has its own **special menu** to adjust and add new item for their new business units by using **Master Item.**

What They Said About RUN System

"RUN System application is very helpful for our company in manufacturing"

Rachma PT. Adi Satria Abadi

"For more than 2 years our company uses the RUN System application, it has been able to help the company's business processes, especially in the Human Capital division"

**Ressa Veranti
PT Hotel Indonesia Natour (Persero)**

"Very helpful application. The support of a great team that can fulfill all kinds of our requests to facilitate the company's business processes."

Muhammad Iqbal PT. KIM (Persero)

Thanks' for your valuable time

*RUN System is an affordable, integrated business management application designed specifically for small and mid size businesses.
It is delivered by qualified business partners that leverage RUN System's global knowledge to provide local service and support. For information on how the power and simplicity of RUN System can help your business, visit www.runsystem.id*

Head Office – Yogyakarta

Grha RUN System
Jl. Pakuningratan No. 15, Yogyakarta, DIY.
+62 274 5306454
info@runsystem.id

Representative Office – Jakarta

Sequis Tower, Level 17
Jl. Jend. Sudirman Kav 71, Senayan, DKI Jakarta.
+62 274 5306454
info@runsystem.id

