

Accelerate Growth
with WISE-iFactory

EFORTECH

Technology for better

Energy | OEE | Predictive Maintenance



Smart Manufacturing Solution

Start Your Digital Transformation!



Plug & Play

Plug and Play Technology with
Faster and Easy Development



Integrated

Support to Integrate with
Existing Systems or Machines



Easy Customization

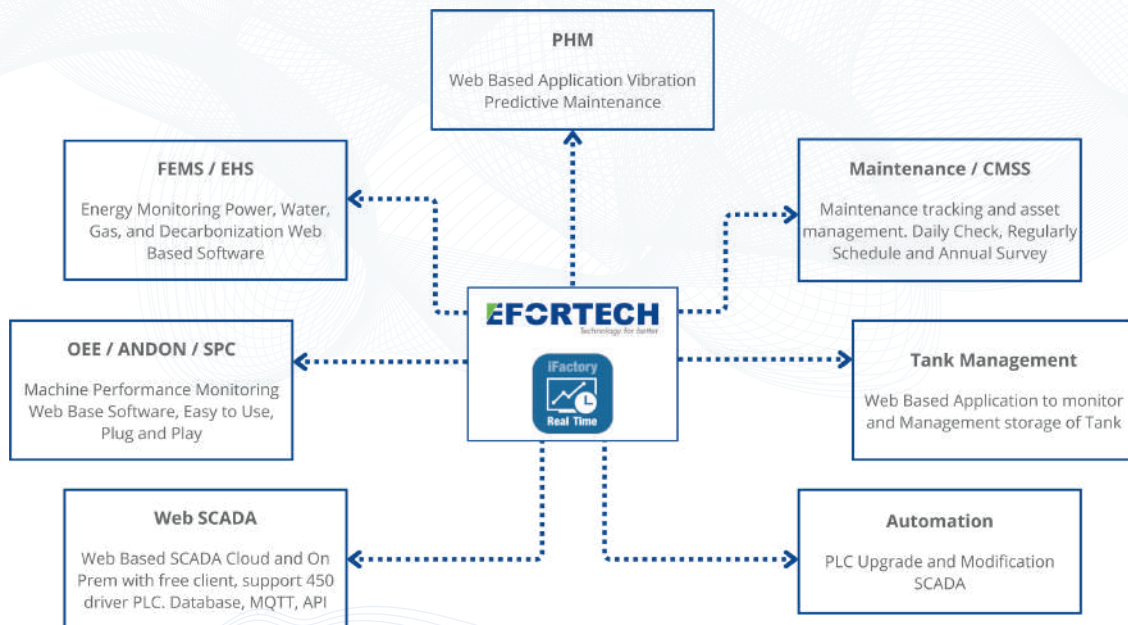
Web-based Dashboard with
Easy Customization Free Client



www.efortechsolutions.com

Plan Introduction

Our iFactory solutions combine cutting-edge computing hardware and user-friendly software, providing Low-code platforms that accelerate digital transformation and Industry 4.0. These industrial solutions, including the WISE-IoT platform: iFactory EHS, Overall Equipment Effectiveness (OEE), and iFactory TPM, empower manufacturers for seamless progress. It offers Domain-Focused Solution Partners (DFSP) easy access to modules, facilitating collaboration with Advantech to provide robust services and tools to specific vertical industries.



Solution Suite

Sustainable Intelligent Facility Solutions Accelerate Energy Management Using iFactory EHS Solution

The right EHS management system can strengthen organizations behind the scenes and enable them to continuously put their best foot forward. iFactory EHS solution is designed to help manufacturers manage employee health, improve safety, and analyze environmental footprints while ensuring operational continuity.



Reduce Carbon Footprint

Optimize high carbon emission processes while reducing carbon footprint.



Keep Workers Safe

Improve workplace safety and manage incidents as they happen to improve ESG & sustainable management.



Streamline Workflows

Reduce equipment data integration and time/costs by consolidating and centralizing tasks.



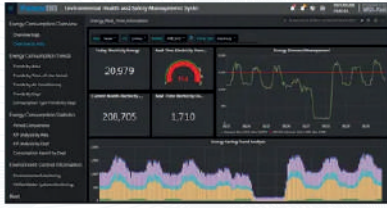
Mobile Management

Improve problem-solving flexibility while reducing downtime costs.



Intuitive Energy Data Visualization

Leverage Advantech's own long-term experience in factory energy management with exclusive customized dashboards. Visual UI has a variety of panels for an overview of all required information and operations.



Energy Overview

Displays energy consumption and cumulative usage for management to monitor monthly consumption.



Environmental Monitoring

Displays the temperature, humidity, and CO2 emissions from individual regions via Grafana Flow Charting.



KPI Management

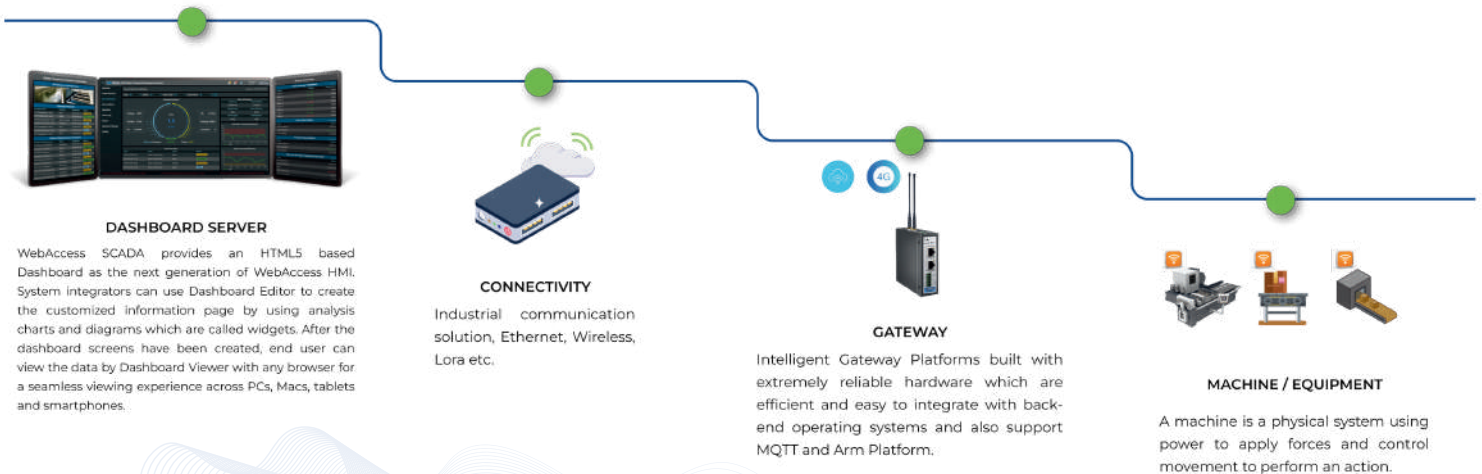
Establishes a baseline for energy usage to determine energy-saving goals. Track actual saving rates to measure saving plan effectiveness.



Prediction - Demand Forecasting

Predict peak demand over periods of time to ensure that the contracted capacity is not exceeded.

Web Based SCADA



Total Productive Maintenance (TPM)



Data-Driven Asset Management

Following ISO 55000 standards, machine data is analyzed for insights to enhance decision-making, efficiency, preventive maintenance, and maximize investment in physical assets.



Real-Time Analytics

The multi-tenant platform uses I.Apps for AI-based monitoring, real-time analytics, and actionable insights and KPIs like machine OEE. This informs smarter decisions using actual data.



Centralized Decision Making

iFactory EAM's data platform collects and processes all data, enabling centralized machine management for quick decisions and optimized performance.

Advantech iFactory MOM (Manufacturing Operations Management) solution is a platform that breaks down information silos in factories by shifting the manufacturing process from production-driven to market-driven, achieving a competitive advantage and quicker response. Following the ISO 9001 standard, iFactory MOM solution also offers ERP and MES system integration services to assist factories achieve goals for cost reduction, product innovation, and quality control.

Equipment Automation Management Solution



Equipment Maintenance Service – Mobile Management

The application interface can be accessed from a mobile device for a real-time overview of upcoming, ongoing, and completed work orders.



Equipment Maintenance Service – Customizable Dashboards

Customizable dashboards allow collected data to be visualized and easily understood at a glance.



Statistical Process Control (SPC)

SPC uses statistical methods for monitoring and controlling production line processes to ensure products meet precise specifications.



Overall Equipment Effectiveness (OEE)

OEE monitors machine performance and collects data to determine utilization rate, production capacity, and yield rates.

Success Case



DCS Integration

Energy and Safety Management System
Web Dashboard Analytic for Factory Centralized.



OEE (Overall Equipment Effectiveness)

Availability, Performance and Quality Monitoring polling data from existing PLC of the machine.



OEE (Overall Equipment Effectiveness)
EHS (Environmental Health and Safety)



9 Factories

OEE (Overall Equipment Effectiveness)
FEMS (Factory Energy Monitoring)



Fuel Engine Monitoring

Fuel Consumption Remote Monitoring from Head office using GSM RTU



Factory Energy Management System

Web Application to monitor electricity and Water Energy usage with a free client



SCADA and PLC Upgrade

Energy Management System Plant 1
Energy Management System Plant 2



Pump Station Monitoring

Monitoring Pump Station and some sensors which are installed in different locations around the city.



Engine Monitoring

Ship Engine and Fuel Consumption Remote Monitoring.



OEE (Overall Equipment Effectiveness)

Counting and Downtime Monitoring



www.efortechsolutions.com



Efortech Solutions



+62 811-3300-143



Surabaya Office

Rungkut Megah Raya H-29
Jl. Raya Kalirungkut No.5
Surabaya, 60293 - Indonesia
Email: info@efortechsolutions.com
Phone: +62 811-3300-143

Bandung Office

Komplek Istana Mekarwangi
Jl. Mekar Utama No.18
Bandung, 40237 - Indonesia
Email: info@efortechsolutions.com
Phone: +62 811-3300-143

Jakarta Office

Plaza Aminta Lantai 6 / 602,
Jl. TB Simatupang No.10, Jakarta
Email: info@efortechsolutions.com
Phone: (+62-31) 872-0000

Subscribe to Our Newsletter!