

ONE PLATFORM CONNECT COLLECTORS



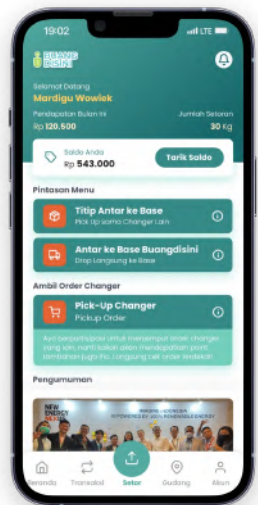
BUANGDISINI APPS



Buangdisini Integrated System

Application that uses data to manage and monitor the waste sourcing information easily. Our application also minimizes errors that can occur when recapping data.

Mobile Apps



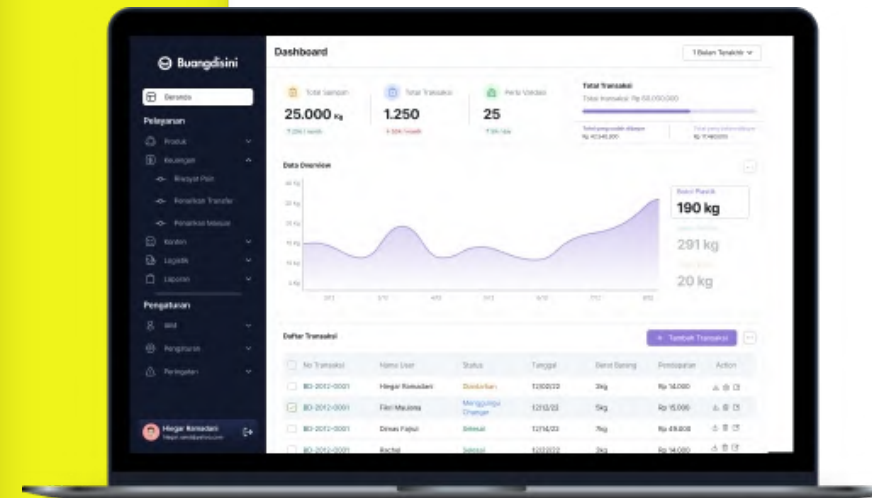
Material Traceability

Real-time Waste Tracking

Quality Feedback Report

Auto-Updated Price

Dashboard Panel



Payment Management

User Management

Transaction Report & Analytics

Cloud Database

In addition, our system has benefit for..

Plastic Credit Purposes

Real-Time Data Analytics

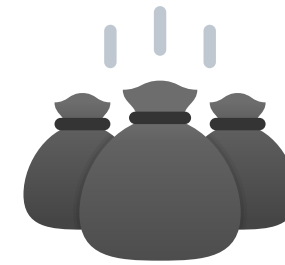
Integrated Data Processing & Financial Report

Material Traceability



Minta Antar Sampah

"**Minta Antar Sampah**" is the main feature that users can use to channel their items through an intermediary changer/another user. This feature is designed to facilitate users who want to channel their items without having to go directly to the base, so that the items/trash can be channeled by other users.



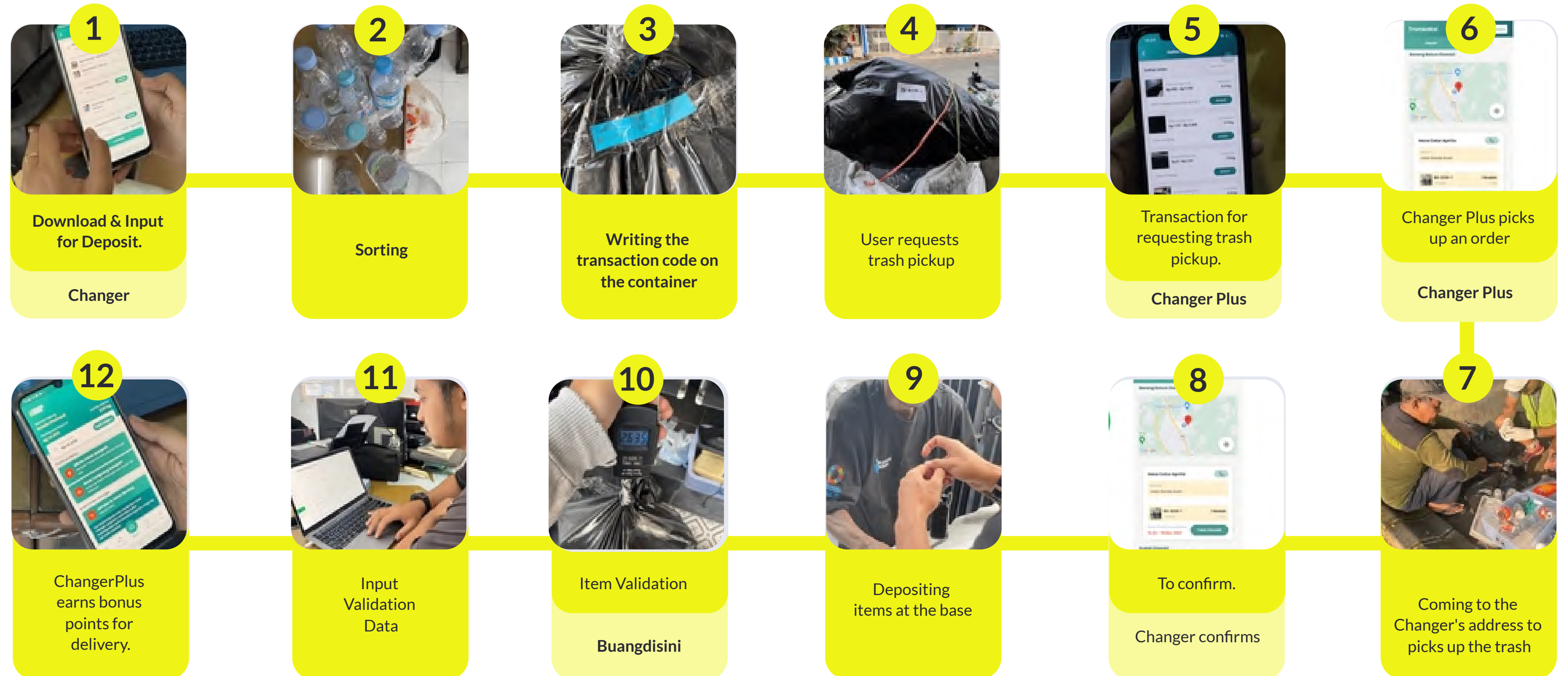
Setor Langsung Sampah

"**Setor Langsung Sampah**" is the main feature that allows users to deposit trash directly to the Verified Warehouse (Dispose Here). Before the user comes to make the deposit, they are required to input Waste Data through the application, which will be directly validated by the warehouse admin.

"Minta Antar Sampah" Flow Processed



User Requests Item Pickup, Pickup Agent Accepts and Delivers the Item.



Flow Setor Langsung Sampah

User Secara Langsung Menyetorkan Barang ke Bank Sampah



Optimal Flow Process



Download & Input for Deposit.



Sorting



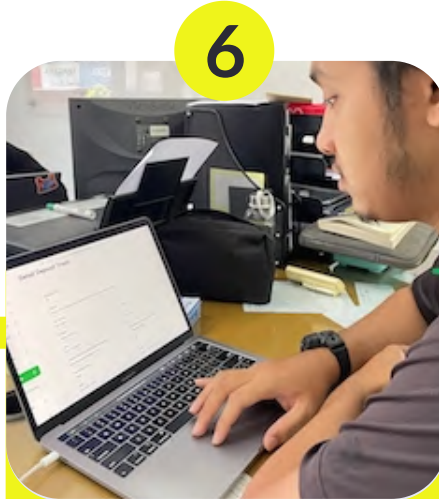
Transaction code writing on the container



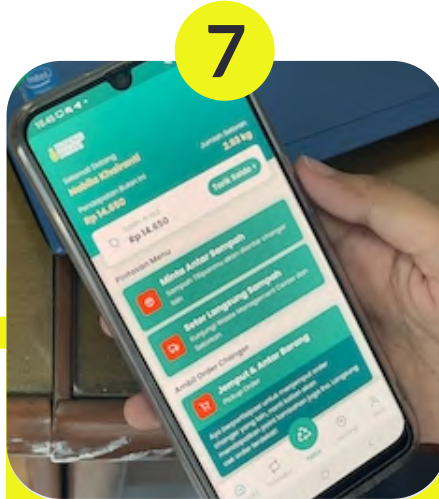
Waste deposit at the base.



Item Validation



Input validation data



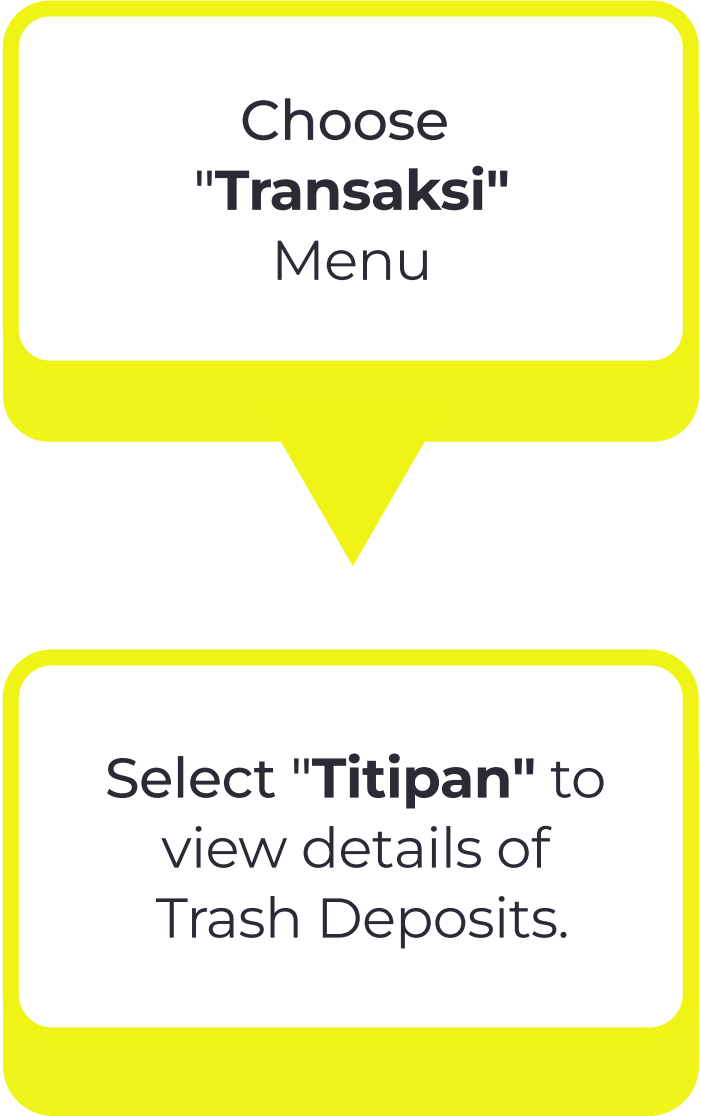
User earns points

Mobile Apps Feature

Real-time Waste Tracking

is a feature that is useful for displaying information about all types of orders (trash deposits) that the user has made, including viewing the order status, whether it belongs to the user or someone else's.

| Flow of Feature Usage



| Data Output



Waste Volume	Information about the amount of trash ordered within a specific period of time.
Type of Waste	Identification of the types of waste deposited, such as Plastic Waste and Oil Waste.
Location	Recording the location of the waste depositor before being transported to the warehouse. Location of other users for the Request Trash Pickup feature.
Pickup Status	If the trash is picked up, this feature can record the pickup status, including the date and time of pickup.

Quality Feedback Report

A quality feedback report is a report that contains feedback on the product quality and performance from users. The purpose of the quality feedback report is to provide objective and structured information about what works well and what needs to be fixed or improved.

| Flow Penggunaan Fitur



| Data Output

Quality Analysis	In-depth analysis of product, service, or process quality.
Data & Information	Generating relevant data for quality evaluation, including from Quality Control, performance measurements, and other related data.
Evaluation Results	Presenting a summary of the quality evaluation results and the achievement of expected quality standards.
Improvement Recommendations	Presenting improvement and quality enhancement recommendations based on the findings of the analysis.
Conclusion Summary	Presenting conclusions about the assessed product quality condition and the urgency of improvement or enhancement
Further Actions	Recommend next steps based on the evaluation results and recommendations."
Target / Standard Comparison	If there are pre-established quality targets or industry standards that must be achieved.



Mobile Apps Feature

Auto-Updated Price

Auto-Updated Price is a feature that automatically displays the trash price information based on the quantity of trash that has been deposited and validated. This information can be found in the transaction history of previous transactions. The price set in the system is used as a reference for calculations per 1 Kilogram."

| Flow of Feature Usage



| Data Output



Automatic price updates.	The system will automatically update the price of products/services based on raw material costs, market fluctuations, or company pricing strategies.
Real-time price updates	This feature ensures that prices are displayed in real-time to customers.
Price update notifications.	Customers or application users may receive notifications when the price of the desired product changes
Price History	The Auto Update Price feature can also record and display the price change history of products.